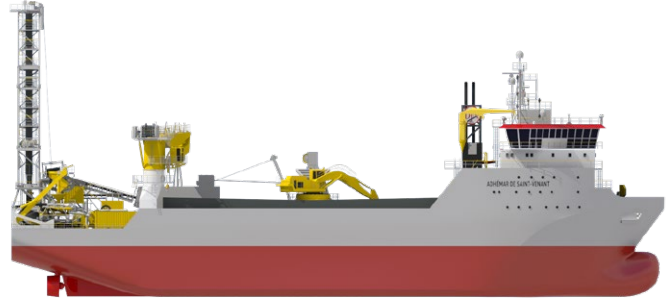




# Adhémar de Saint-Venant.

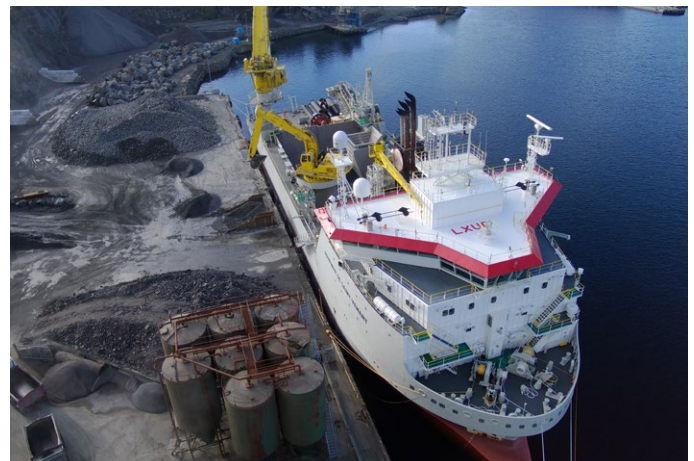
JANDENUL.COM

# Adhémar de Saint-Venant.



## DP2 Trenching and Offshore Support Vessel Subsea Rock Installation Vessel

Deadweight	5,950 ton
Rock carrying capacity	approx. 4,750 t
Length o.a.	95 m
Breadth	22 m
Draught loaded	6.5 m
Dynamic positioning	DYNAPOS AM/AT R Class 2
Propulsion power	2 x 1,250 kW
Bow thruster power	2 x 1,250 kW
Total installed diesel power	7,670 kW
Speed	11.5 kn
Accommodation	60 persons (notation Special Purpose Ship)
Built in	2017
Max fall pipe depth	600 m
Inclined fall pipe diam.	1,000 mm / 1,800 mm
Inclined fall pipe length	45 m / 25 m
Offshore crane	AHC Crane 40 t
Rock Loading capacity	1 Liebherr 984 Excavator (1000 ton/h)
Optional equipment	ROV Trencher Workclass ROV A-Frame



In the Subsea Rock Installation mode, the vessel can install approx. 4,750 t of rock in a single load by means of the excavator, conveyor belt and the fall pipe for accurate rock installation at up to 600 m water depth. Alternatively the rock can be handled through an inclined fall pipe, for secure installation against offshore structures such as jacket platforms, gravity bases or monopile foundations.