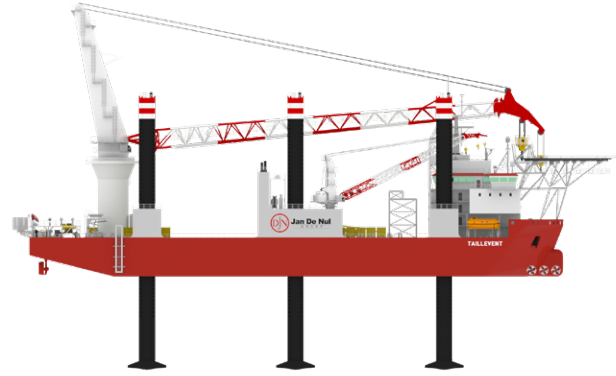




Taillevent.

JANDENUL.COM

Taillevent.



Offshore Jack-up Installation Vessel

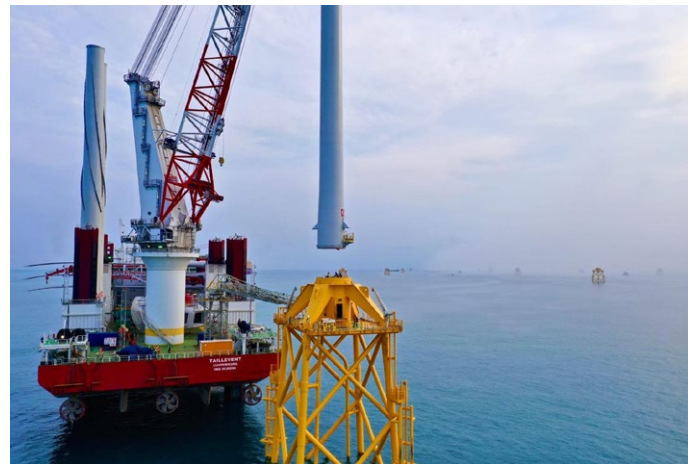
Category	Jack-up vessel, Heavy Maintenance and Construction
Classification	DNV GL 1A1 Self-elevating Wind Turbine installation Unit Crane Unit HELDK CRANE EO DYNPOS-AUTR CLEAN
Flag	Luxembourg
Length Overall	138.55 m
Breadth	40.8 m
Operation Draught	5.22 m
Moulded Depth	10 m
DWT	6,000 t
Dynamic Positioning	DP Class 2 - KONGSBERG K-POS DP-21
Built in	2011

CRANE AND JACK-UP SYSTEM

Crane Make	Gusto MSC GCC-100-HD – Pedestal Mounted
Max. Crane Lifting Capacity	1,000 t at 25 m
Lifting Height Above Deck	120 m
Aux. Hoist	160 t at 70 m
Cargo Deck	3,600 m ²
Max. Deck Load	10 t/m ²
Max. Cargo Weight	6,000 t
Jack-up System	Gusto MSC Hydraulic – 6 legs
Max. Water Depth	40 m
Leg Length	73.27 m

MACHINERY - PROPULSION

Main Gen. Sets	6 x 2,560 kW
Main Propulsion	3 x 3,250 kW azimuth thrusters
Bow Thrusters	3 x 1,500 kW
Transit Speed	11.7 kn
Max. endurance	45 days



ACCOMMODATION

Accommodation	112 persons
Heli Deck	22.2 m diameter, 9.3 t