

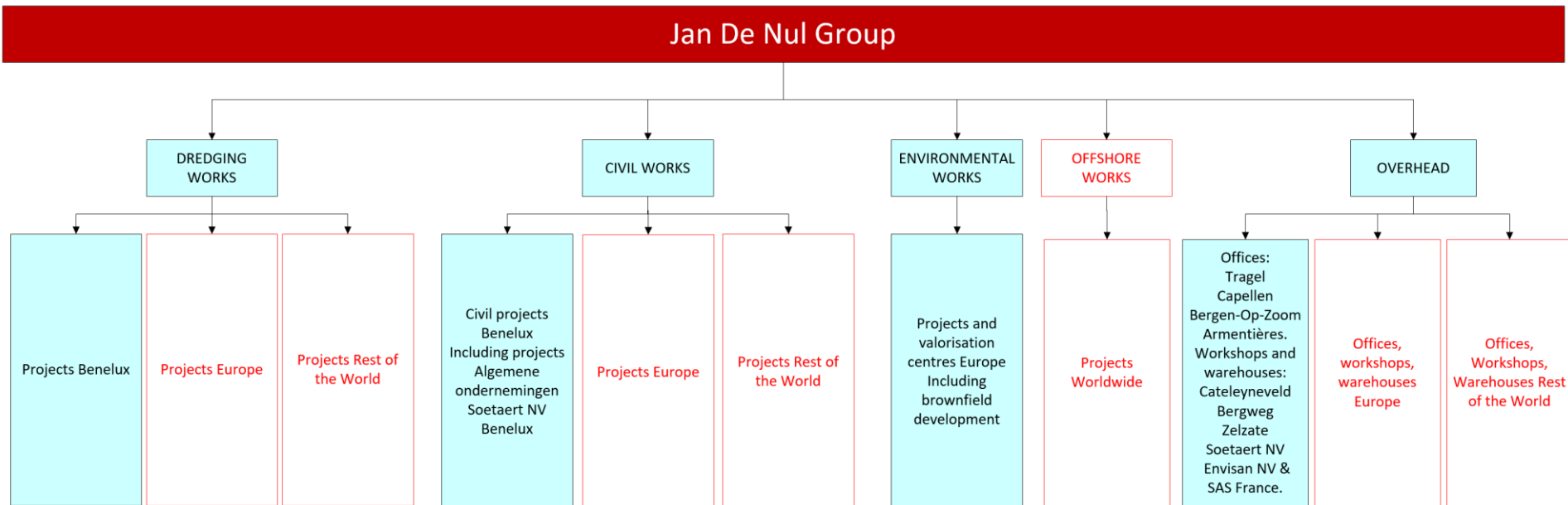
1 EVOLUTION OF CO₂ EMISSIONS

The table below shows the evolution of CO₂ emissions for Jan De Nul Group's operations in the Benelux. Previous years are recalculated annually under the influence of changing emission factors.

		2021	2020	2019
Scope 1	Fuel main vessels	37.499 Ton CO ₂	39.218 Ton CO ₂	27.620 Ton CO ₂
	Diesel	9.402 Ton CO ₂	10.883 Ton CO ₂	6.525 Ton CO ₂
	Natural gas	1.321 Ton CO ₂	1.174 Ton CO ₂	1.242 Ton CO ₂
	Fuel company cars	3.605 Ton CO ₂	575 Ton CO ₂	2.803 Ton CO ₂
	Propane	26 Ton CO ₂	33 Ton CO ₂	36 Ton CO ₂
	Subtotal	51.853 Ton CO₂	51.882 Ton CO₂	38.227 Ton CO₂
Scope 2	Electricity	211 Ton CO ₂	722 Ton CO ₂	1.827 Ton CO ₂
	Heat recovery	27 Ton CO ₂	26 Ton CO ₂	23 Ton CO ₂
	Subtotal	238 Ton CO₂	748 Ton CO₂	1.850 Ton CO₂
Scope 3	Steel	9.374 Ton CO ₂	27.437 Ton CO ₂	50.496 Ton CO ₂
	Concrete	21.161 Ton CO ₂	28.565 Ton CO ₂	11.620 Ton CO ₂
	Transport of soil	8.415 Ton CO ₂	8.418 Ton CO ₂	8.934 Ton CO ₂
	Business Travel	2.152 Ton CO ₂	2.364 Ton CO ₂	1.970 Ton CO ₂
	Commuting	1.207 Ton CO ₂	1.369 Ton CO ₂	4.021 Ton CO ₂
	Fuel private cars	112 Ton CO ₂	89 Ton CO ₂	75 Ton CO ₂
	Rental cars	No longer belongs to Jan De Nul Group's most material Scope 3 emissions due to changed boundary in 2018.		928 Ton CO ₂
	Taxi			85 Ton CO ₂
Subtotal	42.421 Ton CO₂	68.242 Ton CO₂	77.529 Ton CO₂	
Total		94.512 Ton CO₂	120.872 Ton CO₂	117.605 Ton CO₂

2 BOUNDARY

The boundary of the CO₂ performance ladder includes all blue pillars of the Jan De Nul Group.



3 ENERGY POLICY

Jan De Nul Group cherishes sustainable ambitions. But how can we put them into practise? Our awareness programme Code Zero unites all sustainable initiatives into four pillars: Zero Emissions, Zero Accidents, Zero Waste and Zero Breaches. A milestone, rather than a starting point.

Through the CO₂ performance ladder, among others, we are committed to "**Zero emissions**" where we reduce our ecological footprint. **All of Jan De Nul Group's dredging, civil and environmental works in the Benelux** are certified according to the **CO₂ performance ladder**, an instrument to stimulate CO₂ reductions. We continue to achieve the highest level 5.

As part of our **QHSE policy statement**, signed by management, we are committed to protecting the environment and climate and preventing pollution. We continuously strive to **use less energy and emit fewer greenhouse gases**. Whenever possible, we choose **green energy**.

4 TARGETS

4.1 TARGET 2021-01 (SCOPE 1)

Target 2021: reduction of 15% of fuel emissions compared to tender of vessels during project execution

Measures:

- Increase energy efficiency
- Optimisation of operational measures by continuous monitoring
- Use of Renewable and Low Carbon Fuels
- Use of Ship Energy Efficiency Management Plans (SEEMP)

Emissions from ships represent 72% of all scope 1 and 2 emissions in the Benelux. Emissions from ships are by far the largest share of all Jan De Nul's emissions.

4.2 TARGET 2021-02 (SCOPE 1)

Target: 10 % reduction of emissions of company cars by 2025 compared to 2018, with associated interim goal:

- **2021 = 8,35 ton/company car or 4,17 ton/company car per semester**

Measures:

- Replace fossil fuel cars by hybrid and electric vehicles
- Promote bicycle use
- Raise awareness

Emissions from company cars represent 7% of all scope 1 and 2 emissions in the Benelux.

4.3 TARGET 2021-03 (SCOPE 2)

Target: minimum 98% ratio between green electricity and total electricity consumption for all offices and warehouses in 2021

Measures:

- Reduce energy use
- Generate renewable electricity
- Purchase renewable electricity of local origin

The emissions of electricity from offices, workshops and warehouses represent 0% of all scope 1 and 2 emissions in the Benelux. The emissions are 0 because local renewable electricity has an emission of 0 CO₂ in the use phase. The electricity consumption of offices, workshops and warehouses represents 44% of all electricity consumption in the Benelux.

4.4 TARGET 2021-04 (SCOPE 2)

Target: minimum 75% ratio between green electricity and total electricity consumption on civil and environmental projects by 2022, with associated interim goals:

- 2020: minimum 20%
- **2021: minimum 50%**
- 2022: minimum 75%

Measures:

- Reduce energy use
- Generate renewable electricity
- Purchase renewable electricity of local origin
- Ecological site office

The emissions of electricity from civil and environmental projects represent 0.51% of all scope 1 and 2 emissions in the Benelux. The emissions are so low because local renewable electricity has an emission of 0 CO₂ in the use phase, and the emissions of grey electricity are quite low in the Benelux. The electricity consumption of civil and environmental projects represents 56% of all electricity consumption in the Benelux.

4.5 TARGET 2021-05 (SCOPE 3)

Target: demonstrable planned reductions of emissions within the concrete, steel and soil supply through own design optimisations compared to the customer's reference design on 50% of Design, Build & Maintenance projects by 2022, with associated interim goals:

- 50% of the DBFM, DM or DB-projects, tendered in 2021-2022
- **20% of the DBFM, DM or DB-projects, tendered in 2020-2021**
- 1 DBFM, DM or DB-projects, tendered in 2021-2022

Measures:

- Lean design: use less steel, concrete or transport
- Use low-carbon steel, concrete or transport

Emissions from the purchase of steel, concrete and earthmoving represent 41% of all emissions in the Benelux (scope 1, 2 **and 3**), and 92% of all indirect emissions in the Benelux (**scope 3**).

5 EVOLUTION OF REDUCTION TARGETS

Reduction target		Target 2021	Result 2021
Target 2021-1	Reduction of 15% of fuel emissions compared to tender of vessels during project execution	15%	32.32%
Target 2021-2	<p>10 % reduction of emissions of company cars by 2025 compared to 2018, with associated interim goal:</p> <ul style="list-style-type: none"> 2021 = 8,35 ton/company car or 4,17 ton/company car per semester <p>Footprint 2018 = 5241 ton CO₂ which is 8,65 ton/company car</p>	8.35 ton CO ₂ /car	4.82 ton CO ₂ /car
Target 2021-3	Minimum 98% ratio between green electricity and total electricity consumption for all offices and warehouses in 2020	98%	99,94%
Target 2021-4	<p>Target: minimum 75% ratio between green electricity and total electricity consumption on civil and environmental projects by 2022</p> <p>Target 2020: minimum 20%; 2021: minimum 50%; 2022: minimum 75%</p>	50%	87.05%
Target 2021-5	<p>Demonstrable planned reductions of emissions within the concrete, steel and soil supply through own design optimisations compared to the customer's reference design on:</p> <ul style="list-style-type: none"> 50% of DBFM, DBM of DB-projects in 2021-2022 20% of DBFM, DBM of DB-projects in 2020-2021 1 DBFM, DBM of DB-project in 2019-2020 	20% of all design projects	100% of all design projects