

GULLIVER



**Jan De Nul**  
GROUP

[www.jandenul.com](http://www.jandenul.com)

Heavy Lift Vessel

# GULLIVER

## VESSEL

Category DP II Heavy Lift Vessel  
 Classification 100A1, Crane Ship,  
 ShipRight(ACS(B)), LA,  
 IWS, LMC, UMS, DP(AA), CAC 3

Flag Luxemburg

Length o.a. 108.0 m

Breadth Moulded 49 m

Depth Moulded 8 m

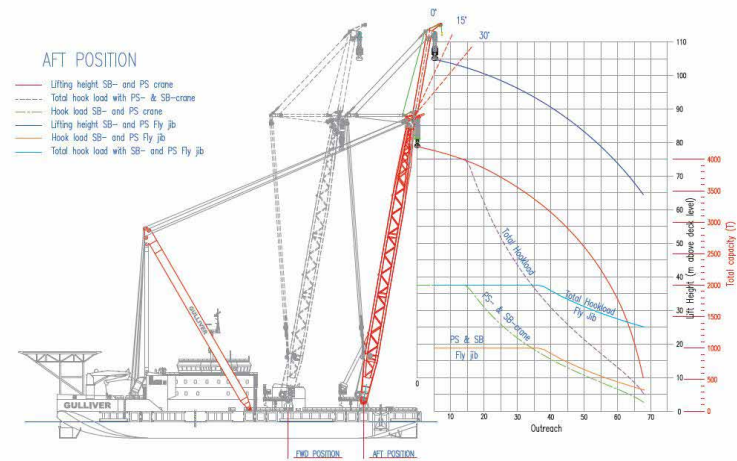
Operating Draught 4.9 m

Net tonnage 4,598 t

Gross tonnage 15,327 t

## LIFTING CAPACITY

Tandem Lift Max. 4,000 ton  
 Portside Crane Main hoist 2 x 1,000 ton  
 Auxiliary hoist 2 x 15 ton  
 Starboard Crane Main hoist 2 x 1,000 ton  
 Auxiliary hoist 2 x 15 ton  
 Max. Lift Height 78.5 m above deck  
 Skidding System



## MACHINERY - PROPULSION

Propulsion Power 2 x 1,720 kW + 2 x 1,505 kW

Type of Propulsion 4 x Azimuth Thrustertr

Transit Speed 7 kn

Mooring winches  
 FWD: - 2 x pcs mooring winches  
 100 t - 1,000 m - Ø58 mm  
 - 2 x pcs mooring winches  
 50 t - 1,000 m - Ø44 mm  
 AFT: - 2 x pcs mooring winches  
 100 t - 1,000 m - Ø58 mm  
 - 2 x pcs mooring winches  
 50 t - 1,000 m - Ø44 mm

## TANK CAPACITY

Fuel oil 1,200 m<sup>3</sup>

Fresh water 920 m<sup>3</sup> + watermark (20 m<sup>3</sup>/day)

Water ballast 10,800 m<sup>3</sup>

## ACCOMMODATION

78 persons  
 Helicopter deck  
 V-SAT internet and voip phone facilities

## BUILDING INFORMATION

Built in 2018

V2019-3

The content of this document is provided strictly for information purposes only. Whilst it has been endeavoured to procure completeness and accuracy, no warranty - express or implied - is given, in particular of fitness for a particular purpose. In no event any Jan De Nul Group company will be liable for any whatsoever damages arising directly or indirectly from the use of or reliance on the content provided herein, even if (previous) advice has been given/received that such damages may occur.

