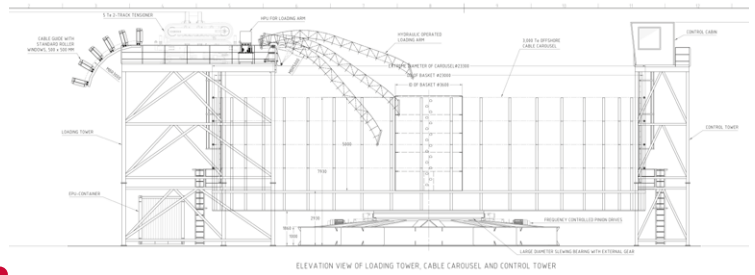




# Cable carousel.

JANDENUL.COM

# Cable carousel.



## 4,000 Te Cable Carousel

### TECHNICAL SPECS

Max. load capacity for onshore storage of product	4,000 Te
Max. load capacity for offshore transport of product	3,600 Te
Max. load capacity for offshore laying of product	3,000 Te
Inner diameter of "basket" (core diameter)	3.6 m
Height of "basket" above carousel floor	5 m
Number of frequency controlled drive units with pinion drive	4 pcs., each 75/86 kW
Power supply	3 ph., 400/440 V, 50/60 Hz
Weight of carousel incl. supporting arrangement for transit (3,600 Te)	370 Te

The portable cable carousel is of the "basket"-type for top loading of cables, umbilicals and flexible pipelines.

The carousel itself is bolted onto a large diameter slewing ring with external gear fitted to a solid foundation designed for deck installation and equipped with electric frequency controlled pinion drives for full speed- and torque control.

Each drive unit includes frequency controlled electric pinion drive c/w gear and thermistor controlled electric motor in IP 56 enclosure with heater and electro-hydraulic operated fail safe brake.

The simplicity in design avoiding the use of wheels, ring-rails and centre king-pin, giving easy installation and reduce necessary maintenance to a minimum.

Supplied loose is a Electric Power Unit arranged in a 20' container for installation next to the cable carousel containing all electric and electronic equipment for the carousel drive units inclusive frequency converters in IP 54 enclosure inclusive PLC controls, filters, brake resistors, control panel, fully programmable inputs/outputs, etc. as well as greasing centrals for automatic greasing of the slewing bearing and the spur gear.

The EPU container is fully air conditioned.

